

# Classic Ranch

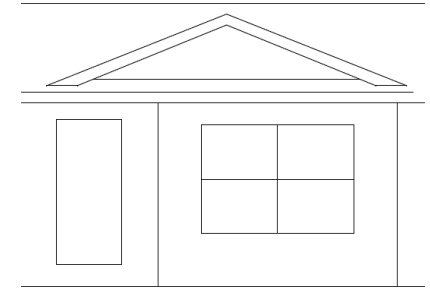
24' x 52' - 1259 sq. ft.

#11581 6-6

# 2026 Stock Model

(Located in Prairie du Chien, WI)

MN #BC146710



<b>Base Price:</b>	<b>\$136,421</b>
This Home Includes The Following Options:	
Large Setback Gable	1995
1Ft-Bumpout-Large	859
3 1/2" Window Lineals X9	882
Vaulted Ceilings	987
Add'L Opening - Classic Home	450
Wiring For Electric Range	175
Wire - Only - For Microwave	75
Wire - Only - For Dishwasher	75
Wire For Fan/Light In Lr W/Fixture	120
Extra 3/4-Bath	2497
Laundry Hookups Only	428
K596 CP Pull Down Faucet	255
Vanity Drawer Base - Top Drawers X2	276
Vent Rangehood To Exterior	200
Crown Molding (Mcrown) - 29.5'	620
Backsplash Tile In Kitchen	595
Pella Vinyl 250 SH - Baths & Laundry	1869
Pella Vinyl 250 Tempered Glass X 2	540
6' Pella 250 Patio Door - Upgrade	2090
Custom Cabinets	514
<b>Total With Options Shown</b>	<b>\$151,923</b>

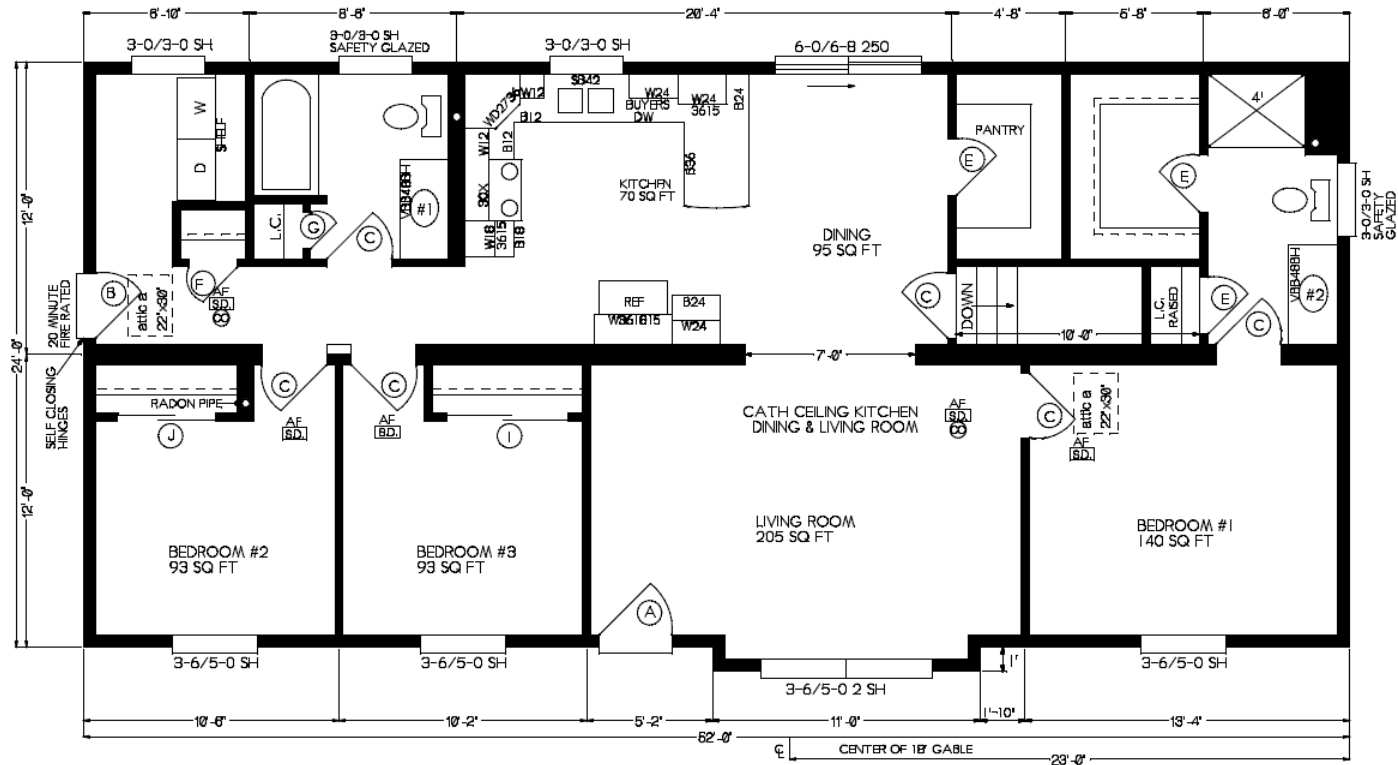
**Price Includes: Crane Setting, All Blueprints, R55 Ceilings, R21 Exterior Walls, Kohler Plumbing, Pella Windows, 200 Amp Service, All Applicable Tax and Much More!!**

**\*See Sales Rep For Any Applicable Delivery Fees**

## Color Information...

*Granite Gray Siding, Black Shingles, White Trim, Pella 250 SH White Windows, White Lineals, Arbor Oak Karoo Cabinets, White Ice Granite Countertop, SS Kitchen Sink, SS Vented Rangehood, Java Bean Oak Trim and Doors, CDL77-04W Boathouse Brown Flooring, 105 Daytona Sand Carpet, White Baths, 1016 Vanity Tops, Oil Rubbed Bronze Hardware, and Chrome Plumbing Fixtures*

April 2026



Prices Are Subject to Change